



Accredited for compliance with ISO/IEC 17025 – Testing
NATA is a signatory to the ILAC Mutual Recognition Arrangement for the mutual recognition of the equivalence of testing, medical testing, calibration and inspection reports
Accreditation No. 2735

OIL-WET INCLINING PLATFORM SLIP RESISTANCE TEST

Enduroplank with Endurogrip

Prepared for: Repeat Plastics Australia Pty Ltd
Mark Jacobsen
27 Titan Drive
CARRUM DOWNS VIC 3201

Specimen Description: Enduroplank with Endurogrip, 198x1003 mm.

No. of Specimens: 3 off

Surface Structure: Profiled

Specimen Preparation: Washed with water and pH neutral detergent, rinsed then dried.

Specimen Configuration: Unfixed

Test Direction: Test conducted parallel with surface profile.

Joint Type & Width: N/A

Air Temperature: 22°C

Test Standard: AS 4586:2013 Slip resistance classification of new pedestrian surface materials, Appendix D - Oil Wet Inclining Platform Test

Test Shoe: Leipzig V73-SP

Test Location: ATTAR, Unit 1, 64 Bridge Road, Keysborough.

Test Date: 12 May 2020

Test Personnel: Dale Siegle and Marcus Braché

| | |
|---|------------|
| Displacement Space (rounded to the nearest 0.5cm ³ /dm ²): | Not tested |
| Displacement Space Assessment Group (Appendix E, AS 4586 - 2013): | Not tested |
| Corrected mean overall acceptance angle (α_{ave}) (rounded down to the nearest degree): | 24° |
| Classification: | R11 |

These results apply only to the specimens tested and it is recommended that before selection of flooring or paving materials the effect of service conditions, including maintenance procedures and wear on their slip resistance be checked.

Reviewed By:



Dale Siegle
Compliance and Test Technician
Approved Signatory



Awel Guled
Compliance and Test Technician
Approved Signatory

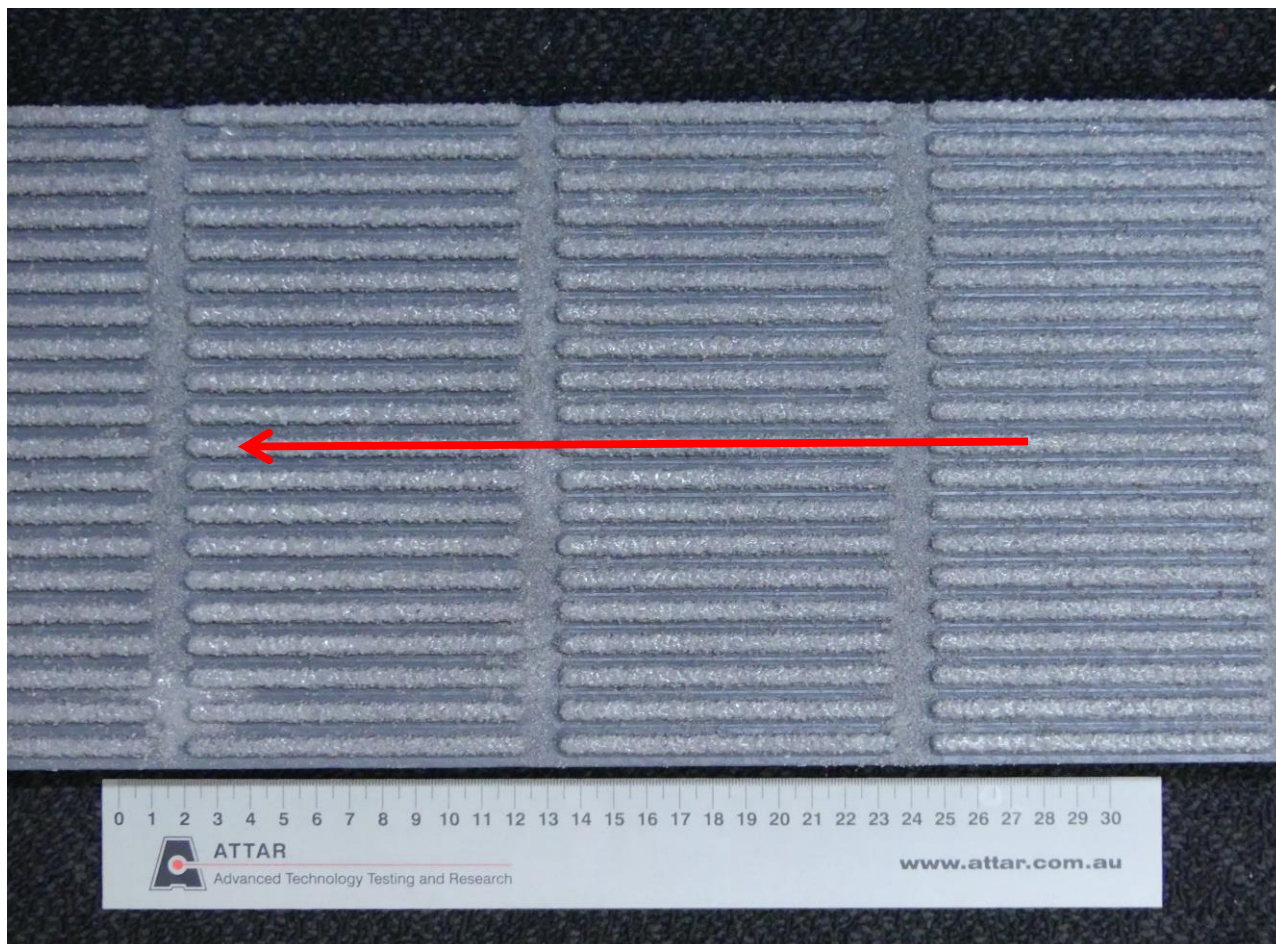


Figure 1: Enduroplank with Endurogrip
Arrow indicates direction of testing

CLASSIFICATION CRITERIA – AS 4586 - 2013
Oil Wet Inclining Platform Test – Appendix D

Compliance

TABLE 5: CLASSIFICATION OF PEDESTRIAN SURFACE MATERIALS ACCORDING TO THE OIL-WET INCLINING PLATFORM TEST

| Classification | Angle, degrees |
|-----------------------|-----------------------|
| No Classification | <6 |
| R9 | ≥6 <10 |
| R10 | ≥10 <19 |
| R11 | ≥19 <27 |
| R12 | ≥27 <35 |
| R13 | ≥35 |