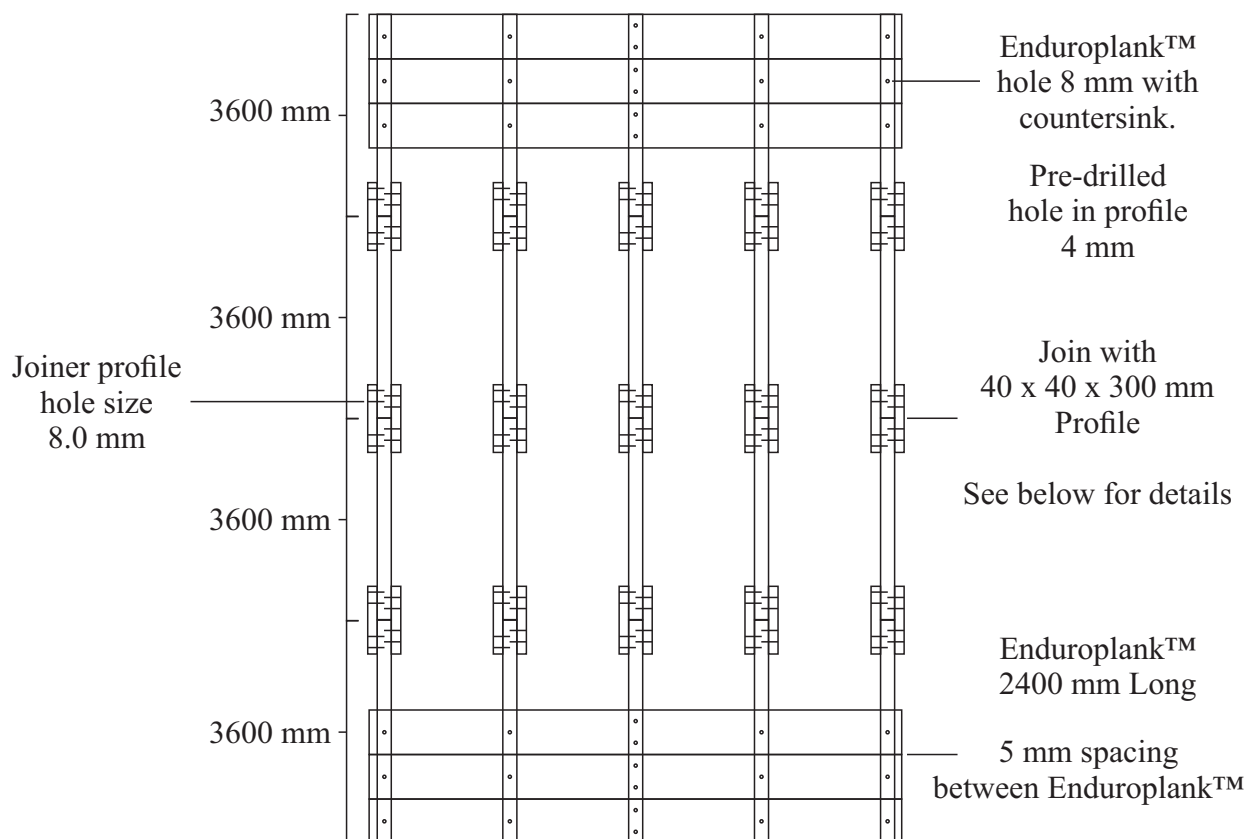
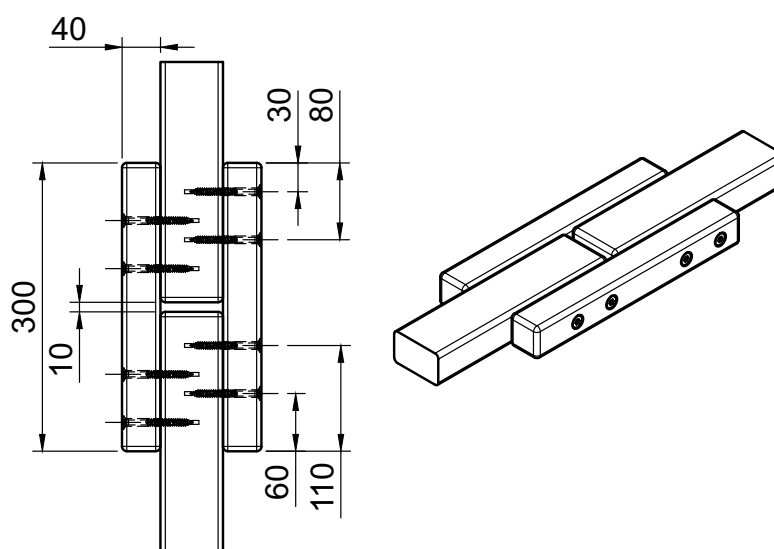


### Install Diagram



### Joint Example

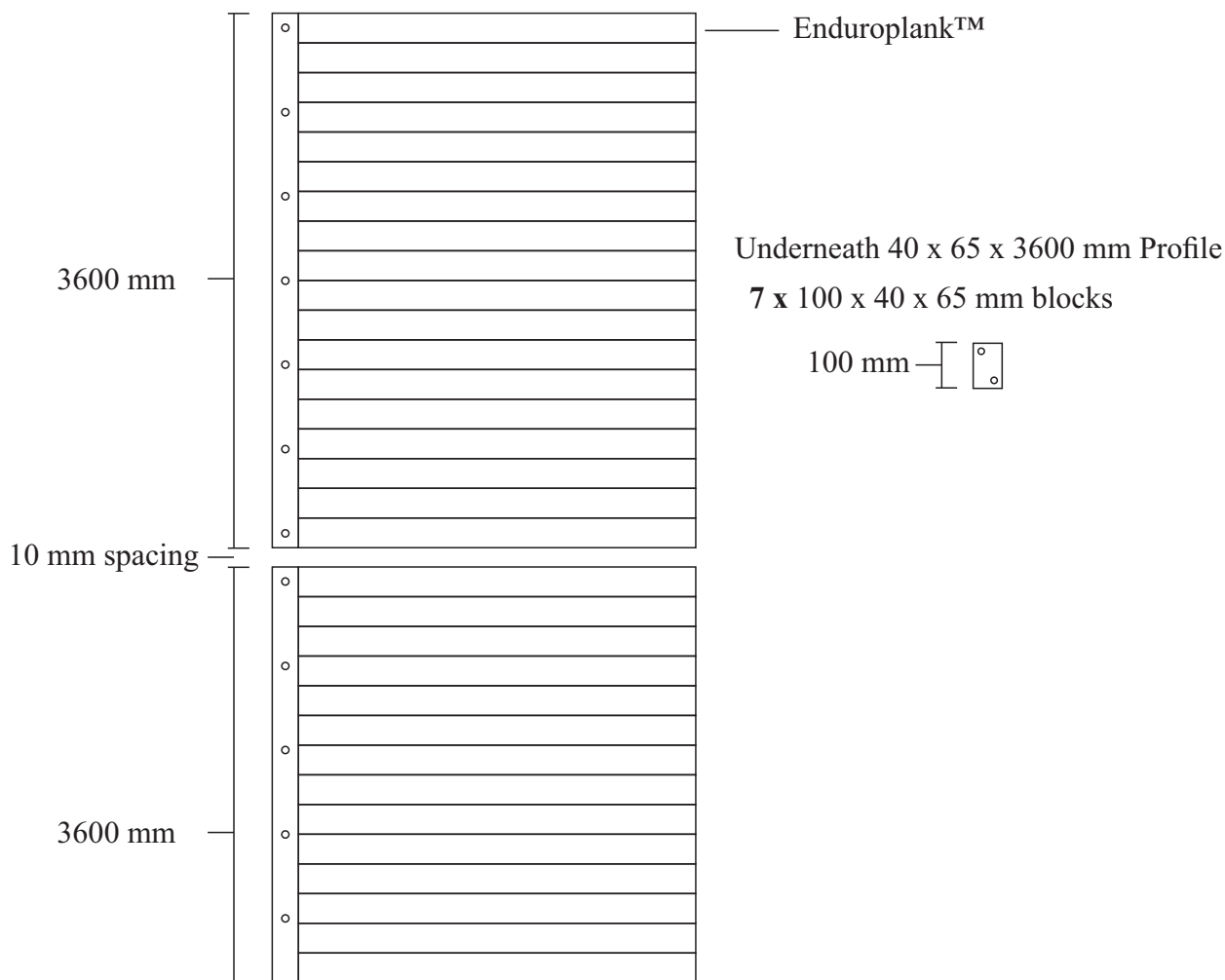


Joiner fixing requires 75 mm stainless steel bugle screws  
Enduroplank™ fixing requires 100 mm stainless steel bugle screws

When securing down Enduroplank™ pre-drill a 4 mm hole in the profile.  
Secure using two screws in the middle of the plank, then one screw for the other fixing points.  
*Please note: drawings not to scale*

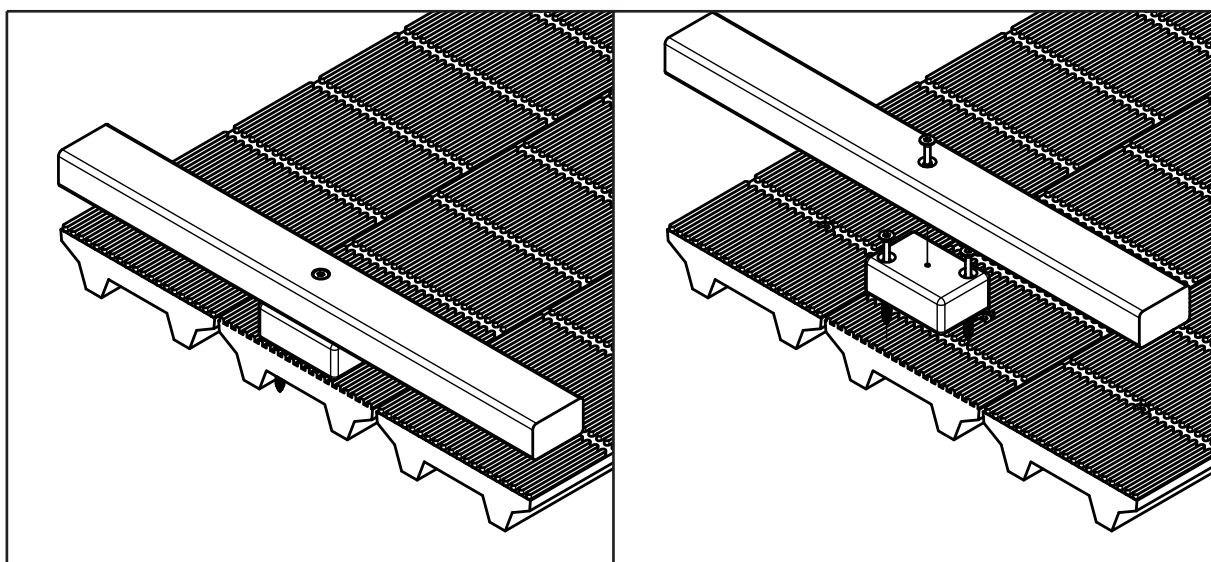
All dimensions are in millimetres (mm) unless specified.

### Install Diagram



*Please note: drawing is not to scale*

### Section Example



All dimensions are in millimetres (mm) unless specified.

