

# 145mm Bollard

## Standard Modifications

**Mod # 1:** Single Reflector

**Mod # 2:** Double Reflector - Opposite sides

**Mod # 3:** Single Collar Route

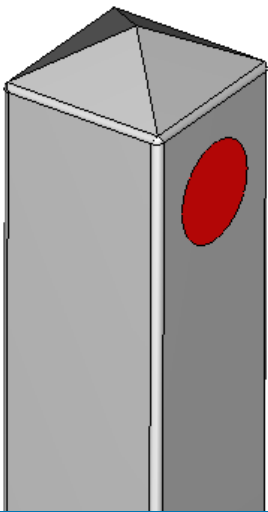
**Mod # 4:** Single Collar Route, Single Reflector

**Mod # 5:** Single Collar Route, Double Reflector

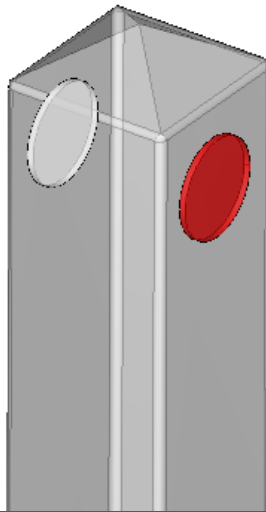
**Mod # 6:** Double Collar Route

*\*Refer to individual modification sheets for individual specifications*

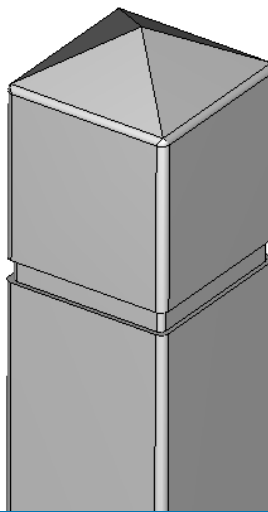
Mod  
# 1



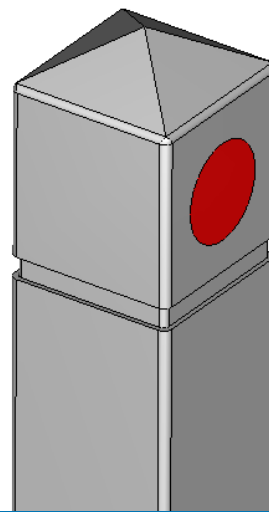
Mod  
# 2



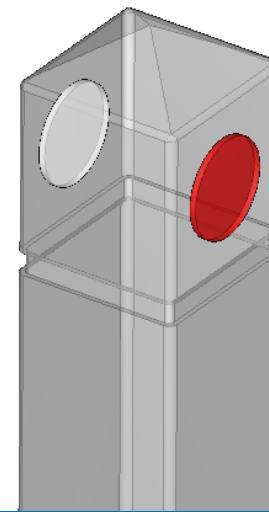
Mod  
# 3



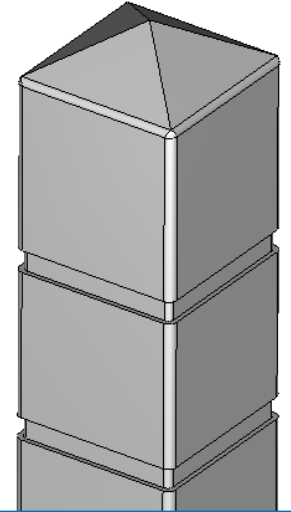
Mod  
# 4



Mod  
# 5

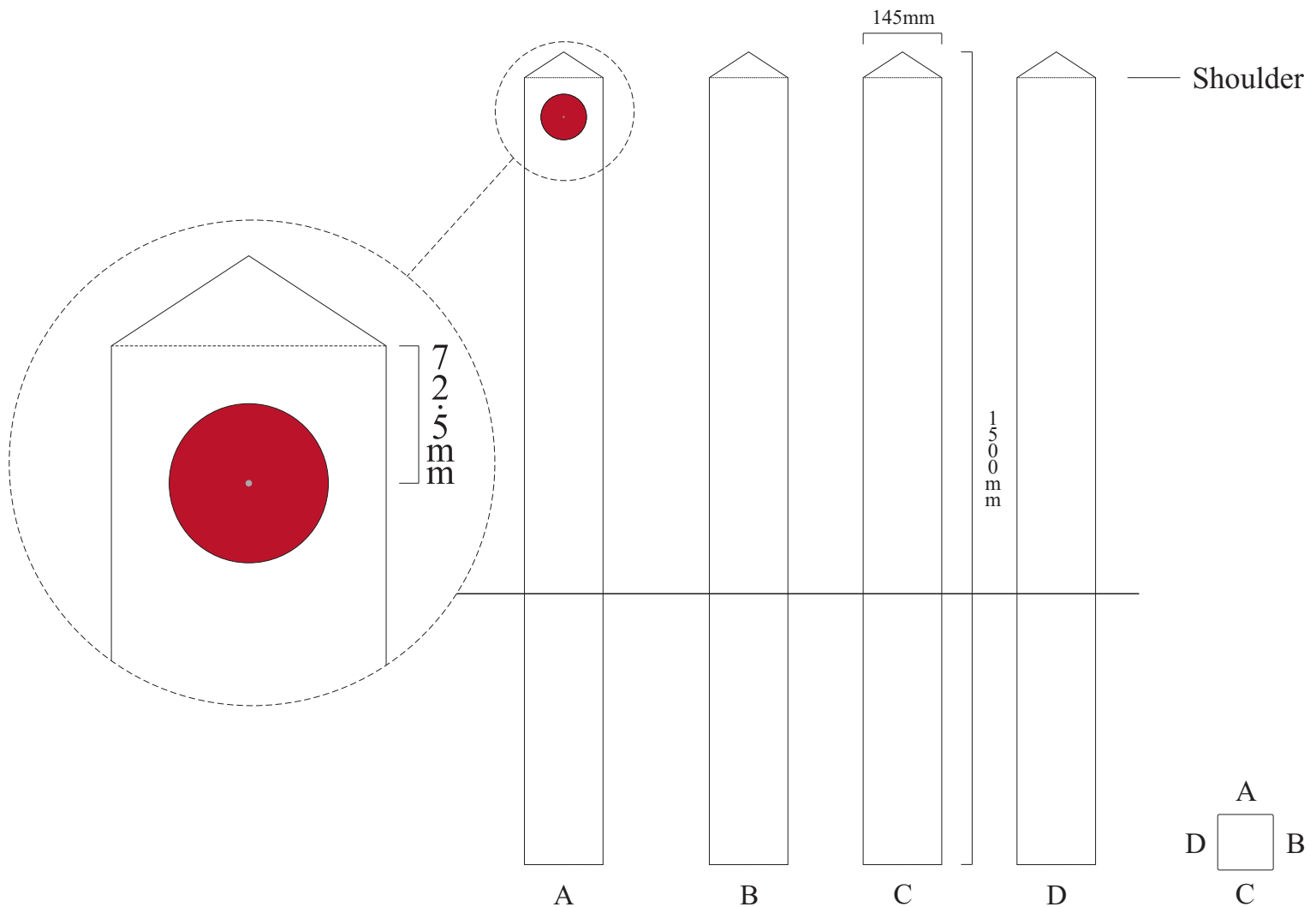


Mod  
# 6



# Bollard Modification

## 145 mm Bollard - Modification # 1

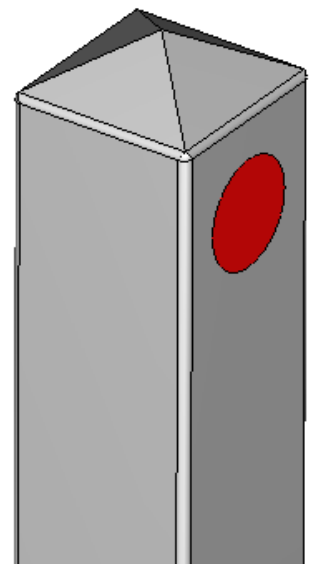


### Reflector

Distance from shoulder of bollard to centre of reflector: **72.5mm**

Reflector size: **84mm** Round

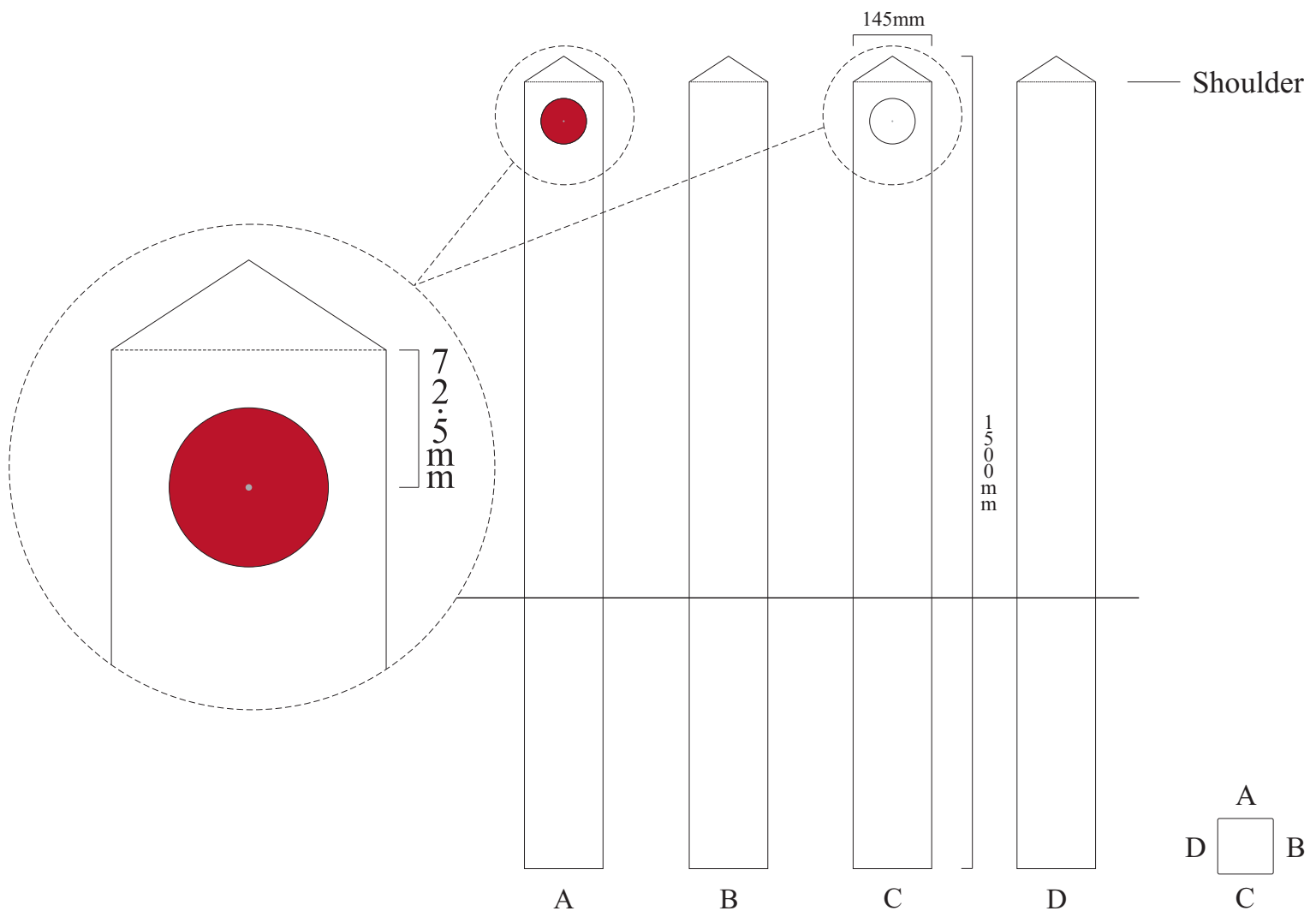
Reflector Colour: **Red**



*\*Reflector is recessed into bollard and made flush to surface*

# Bollard Modification

## 145 mm Bollard - Modification #2

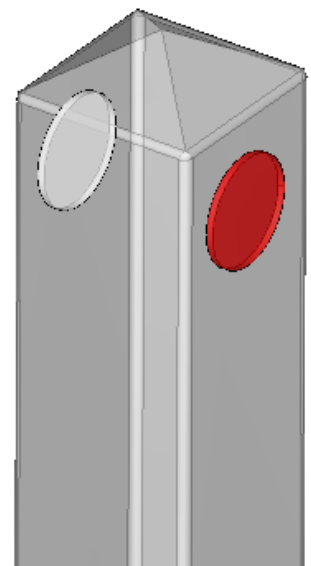


### Reflector

Distance from shoulder of bollard to centre of reflector: **72.5mm**

Reflector size: **84mm** Round

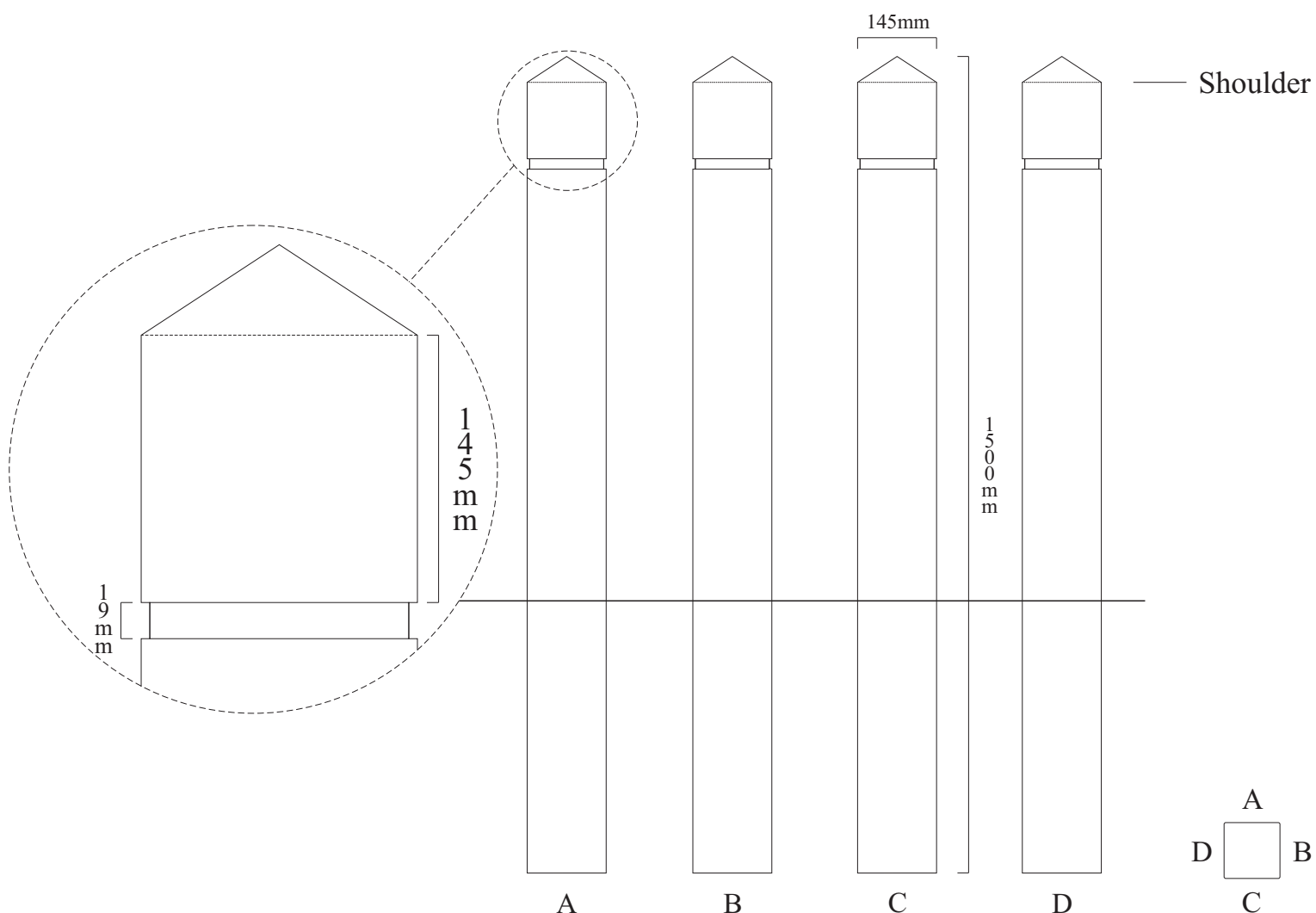
Reflector Colour: **Red** on side A. **White** on side C



*\*Reflector is recessed into bollard and made flush to surface*

# Bollard Modification

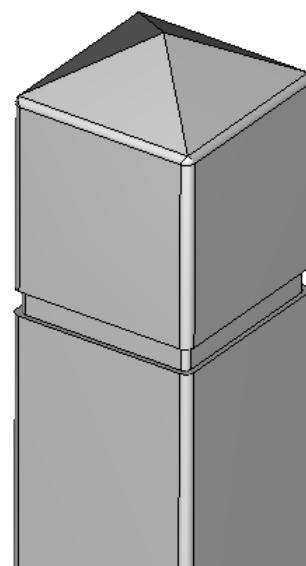
## 145 mm Bollard - Modification #3



### Route

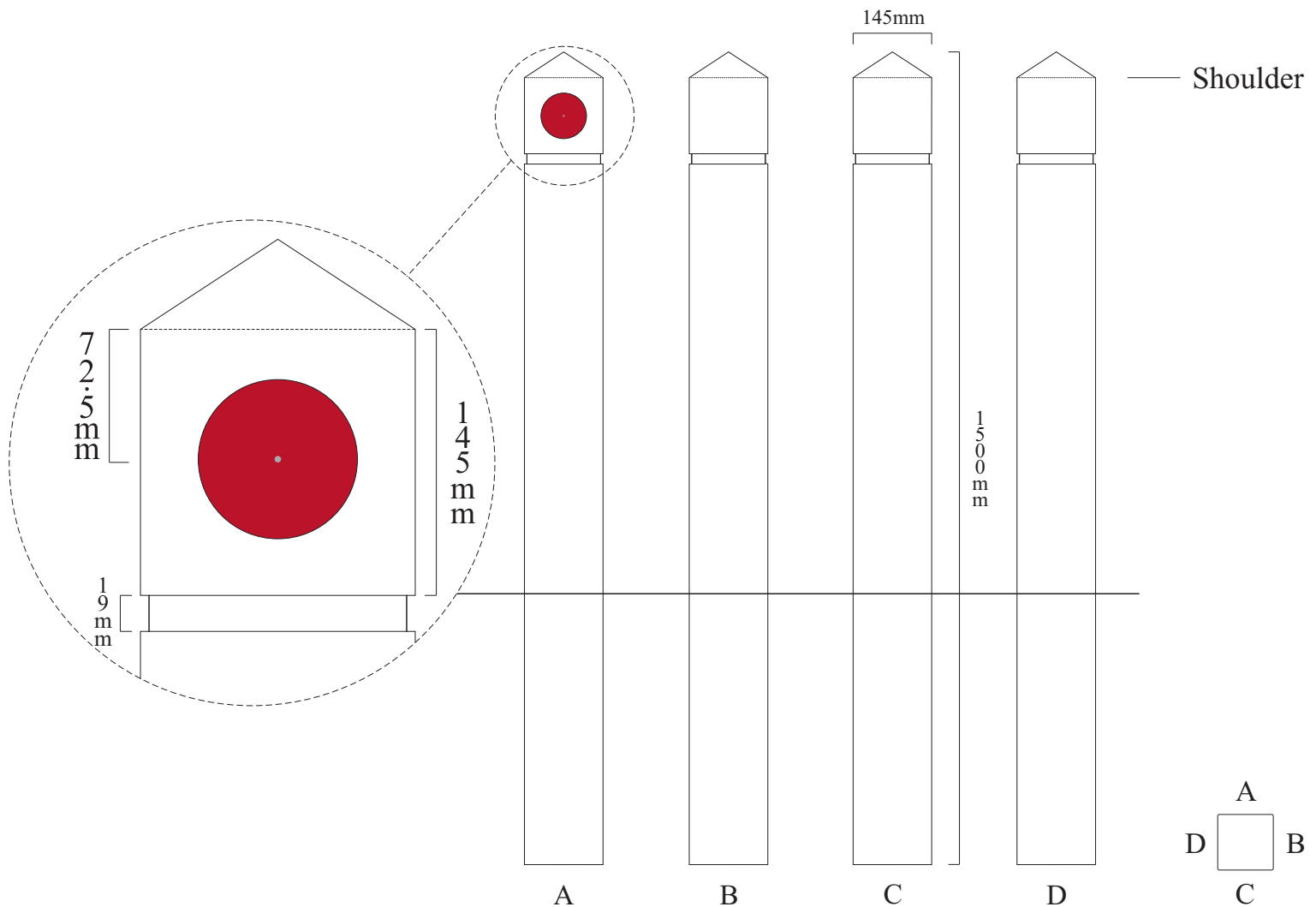
Distance from shoulder of bollard to top of route: **145mm**

Route size: **19mm**



# Bollard Modification

## 145 mm Bollard - Modification #4



### Route

Distance from shoulder of bollard to top of route: **145mm**

Route size: **19mm**

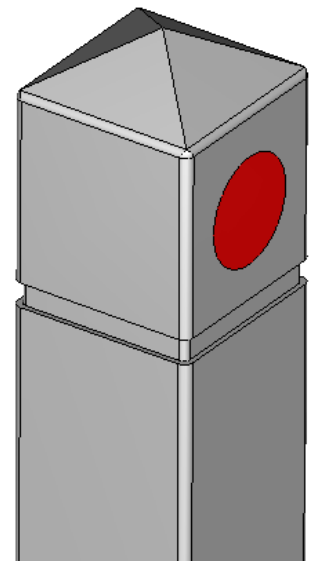
### Reflector

Distance from shoulder of bollard to centre of reflector: **72.5mm**

Reflector size: **84mm** Round

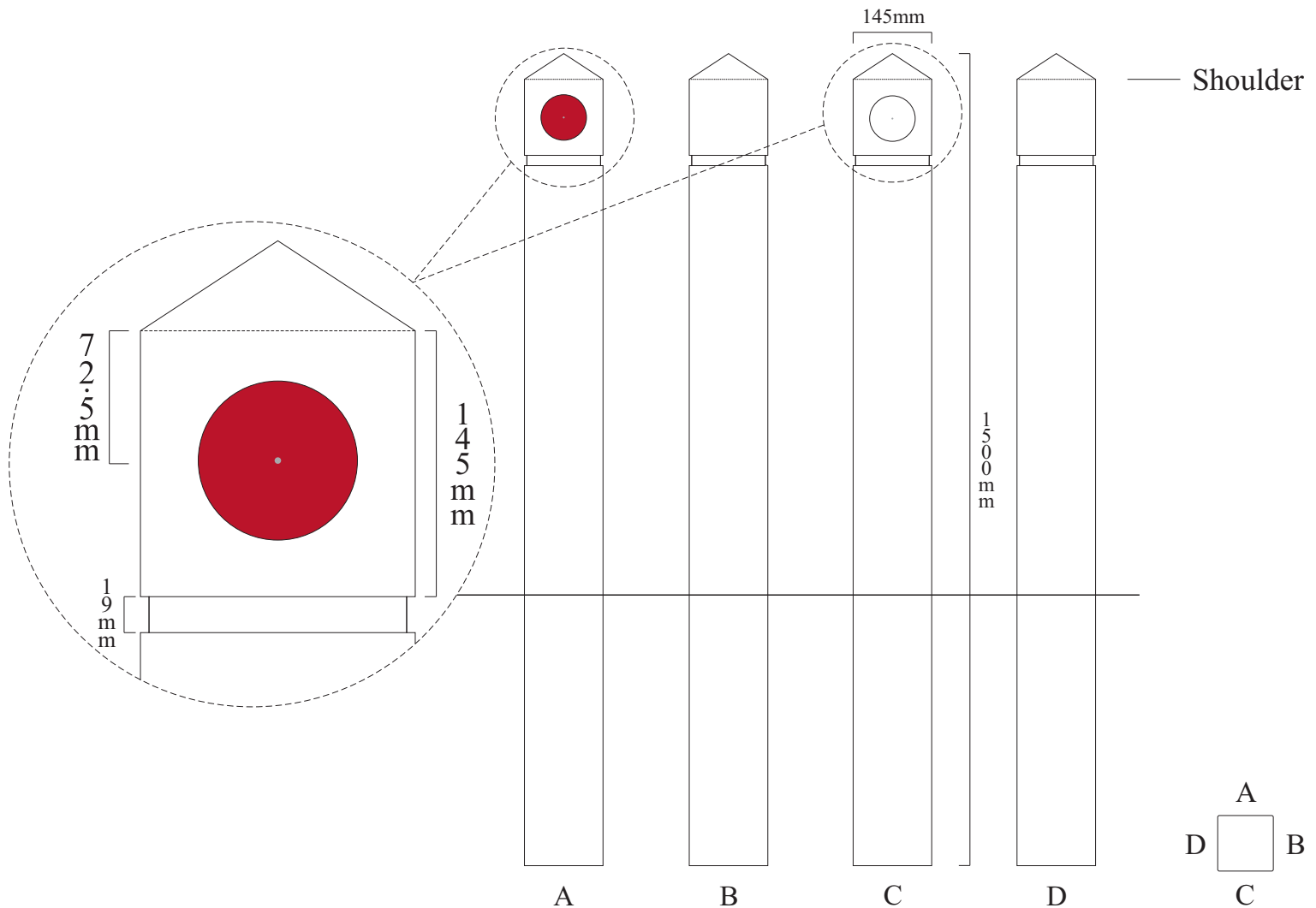
Reflector Colour: **Red**

*\*Reflector is recessed into bollard and made flush to surface*



# Bollard Modification

## 145 mm Bollard - Modification #5



### Route

Distance from shoulder of bollard to top of route: **145mm**

Route size: **19mm**

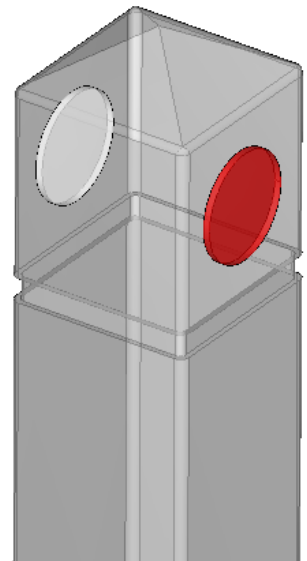
### Reflector

Distance from shoulder of bollard to centre of reflector: **72.5mm**

Reflector size: **84mm** Round

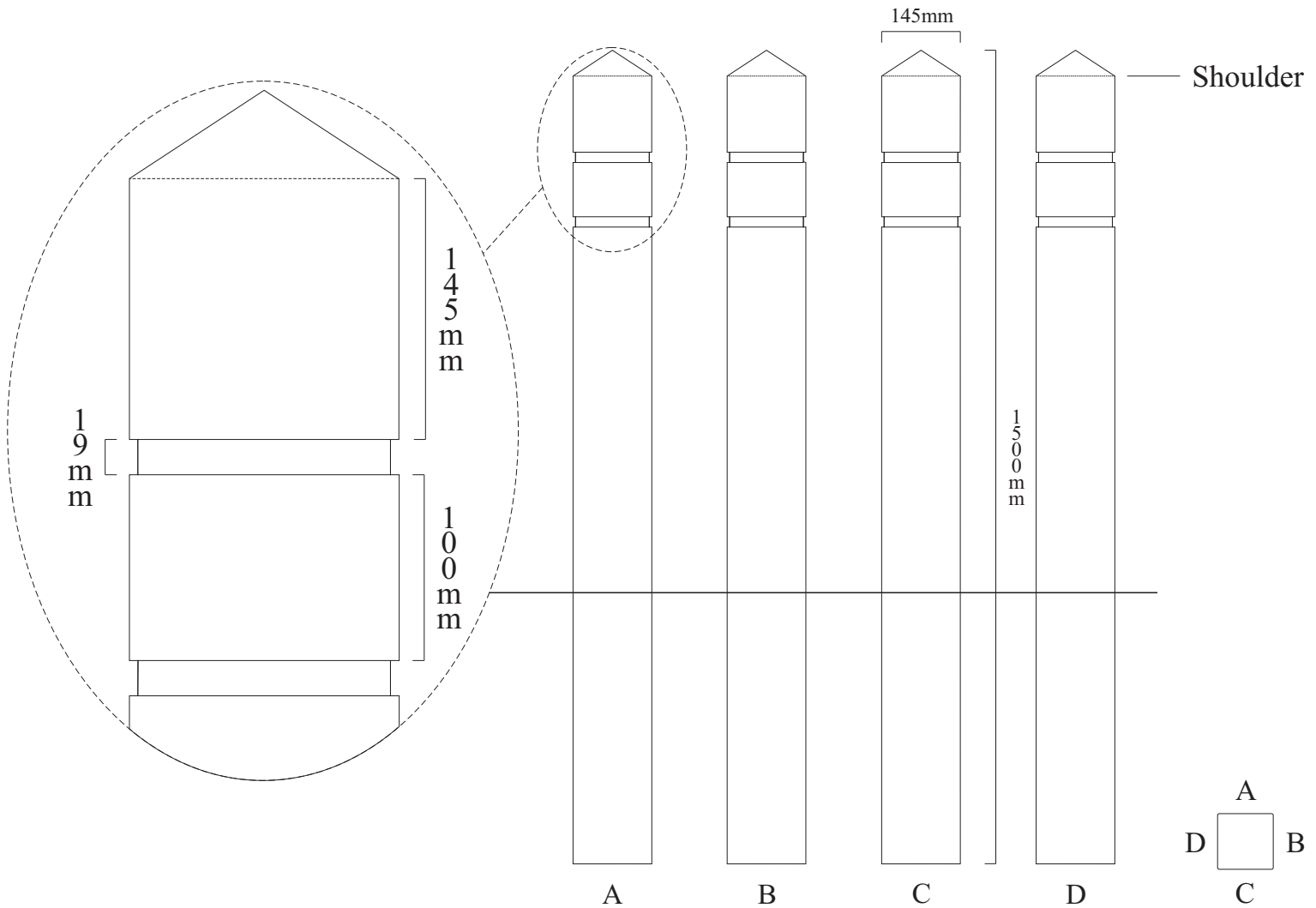
Reflector Colour: **Red** on side A. **White** on side C

*\*Reflector is recessed into bollard and made flush to surface*



# Bollard Modification

## 145 mm Bollard - Modification #6



### Route

Distance from shoulder of bollard to top of route: **145mm**

Route size: **19mm**

Distance from bottom of route to top of route: **100mm**

